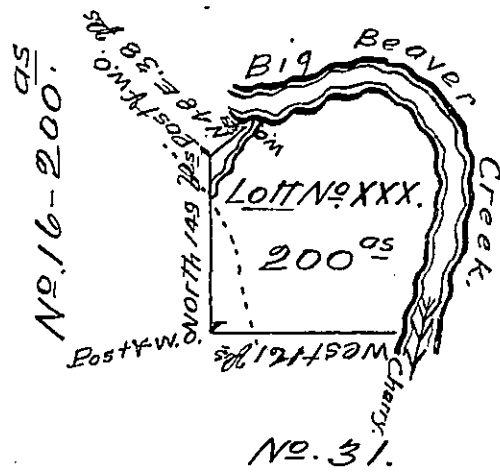


Courses down Big Beaver Creek.

| | | | | |
|----|----|----|-----|------------------|
| N. | 76 | E. | 115 | $\frac{75}{100}$ |
| S. | 62 | E. | 39 | $\frac{75}{100}$ |
| S. | 35 | E. | 24 | $\frac{75}{100}$ |
| S. | 12 | E. | 38 | $\frac{75}{100}$ |
| S. | 16 | W. | 120 | $\frac{75}{100}$ |
| S. | 10 | W. | 12 | $\frac{75}{100}$ |



In Pursuance of an Act of General Assembly of the State of Pennsylvania, passed the 24th day of February 1785, entitled "An Act for directing the mode of distributing the donation lands promised the Troops of this Commonwealth, and by order of the Surveyor General with the approbation of the Honorable the Supreme Executive Council, I have surveyed on the 11th day of October 1785, the above described Tract of Two Hundred acres of land, and allowance of six $\frac{75}{100}$ Cent. for Roads &c. No. XXX, situate in district No. 1, on the west side of the Allegany River in the County of Westmoreland.

To John Lukens Esq^r }
 SURV. General. } William Alexander D.S.

IN TESTIMONY that the above is a copy of the original remaining on file in the Department of Internal Affairs of Pennsylvania, made conformably to an Act of Assembly approved the 16th day of February, 1833, I have hereunto set my Hand and caused the Seal of said Department to be affixed at Harrisburg, this fifth day of August 1908.

Henry Howeth
 Secretary of Internal Affairs.